



CÓDIGO									
0	0	0	0	0	0	0	0	0	0
1	1	1	1	1	1	1	1	1	1
2	2	2	2	2	2	2	2	2	2
3	3	3	3	3	3	3	3	3	3
4	4	4	4	4	4	4	4	4	4
5	5	5	5	5	5	5	5	5	5
6	6	6	6	6	6	6	6	6	6
7	7	7	7	7	7	7	7	7	7
8	8	8	8	8	8	8	8	8	8
9	9	9	9	9	9	9	9	9	9

EJEMPLO DE CÓDIGO									
0	3	9	5	7	2	8	9		
<input type="radio"/>	<input type="radio"/>	<input type="radio"/>	<input type="radio"/>	<input type="radio"/>	<input type="radio"/>	<input type="radio"/>	<input type="radio"/>	<input type="radio"/>	<input type="radio"/>
<input type="radio"/>	<input type="radio"/>	<input type="radio"/>	<input type="radio"/>	<input type="radio"/>	<input type="radio"/>	<input type="radio"/>	<input type="radio"/>	<input type="radio"/>	<input type="radio"/>
<input type="radio"/>	<input type="radio"/>	<input type="radio"/>	<input type="radio"/>	<input type="radio"/>	<input type="radio"/>	<input type="radio"/>	<input type="radio"/>	<input type="radio"/>	<input type="radio"/>
<input type="radio"/>	<input type="radio"/>	<input type="radio"/>	<input type="radio"/>	<input type="radio"/>	<input type="radio"/>	<input type="radio"/>	<input type="radio"/>	<input type="radio"/>	<input type="radio"/>
<input type="radio"/>	<input type="radio"/>	<input type="radio"/>	<input type="radio"/>	<input type="radio"/>	<input type="radio"/>	<input type="radio"/>	<input type="radio"/>	<input type="radio"/>	<input type="radio"/>
<input type="radio"/>	<input type="radio"/>	<input type="radio"/>	<input type="radio"/>	<input type="radio"/>	<input type="radio"/>	<input type="radio"/>	<input type="radio"/>	<input type="radio"/>	<input type="radio"/>
<input type="radio"/>	<input type="radio"/>	<input type="radio"/>	<input type="radio"/>	<input type="radio"/>	<input type="radio"/>	<input type="radio"/>	<input type="radio"/>	<input type="radio"/>	<input type="radio"/>
<input type="radio"/>	<input type="radio"/>	<input type="radio"/>	<input type="radio"/>	<input type="radio"/>	<input type="radio"/>	<input type="radio"/>	<input type="radio"/>	<input type="radio"/>	<input type="radio"/>
<input type="radio"/>	<input type="radio"/>	<input type="radio"/>	<input type="radio"/>	<input type="radio"/>	<input type="radio"/>	<input type="radio"/>	<input type="radio"/>	<input type="radio"/>	<input type="radio"/>

VERSIÓN				
<input type="radio"/>	<input type="radio"/>	<input type="radio"/>	<input type="radio"/>	<input type="radio"/>
<input type="radio"/>	<input type="radio"/>	<input type="radio"/>	<input type="radio"/>	<input type="radio"/>

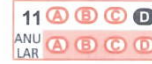
APELLIDOS	
NOMBRE	
PROCESO SELECTIVO	
TURNO	FECHA

INSTRUCCIONES

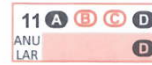
Para cumplimentar los datos y responder a las preguntas, rellene completamente, pero sin salirse, el círculo correspondiente utilizando **bolígrafo azul o negro (nunca rojo)**, tal y como se indica en la siguiente figura:



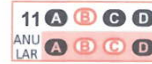
Para cada pregunta hay **dos líneas de respuesta**: la primera se utiliza para marcar la respuesta correcta y la segunda, con una trama coloreada y el encabezado "ANULAR", para anularla. Lea atentamente la pregunta y una vez elegida la alternativa correcta **márquela** en la primera de las dos líneas de respuesta correspondiente a la pregunta. Ejemplo:



Si se equivoca y desea anularla, marque el círculo inmediatamente inferior al que quiere anular, y después marque en la primera línea de la misma pregunta la alternativa correcta. En el siguiente ejemplo se había elegido la alternativa **D** y se anuló marcando **D** en la línea tramada inmediatamente debajo. Después se marcó como respuesta la alternativa **A**.



Si ahora desease anular la respuesta **A** y elegir la **C**, podría hacerlo repitiendo la operación, como sigue:



RESPUESTAS

1 <input type="radio"/> A <input type="radio"/> B <input checked="" type="radio"/> C <input type="radio"/> D	18 <input type="radio"/> A <input type="radio"/> B <input checked="" type="radio"/> C <input type="radio"/> D	35 <input type="radio"/> A <input type="radio"/> B <input type="radio"/> C <input type="radio"/> D	52 <input type="radio"/> A <input type="radio"/> B <input type="radio"/> C <input type="radio"/> D	69 <input type="radio"/> A <input type="radio"/> B <input type="radio"/> C <input type="radio"/> D	86 <input type="radio"/> A <input type="radio"/> B <input type="radio"/> C <input type="radio"/> D	103 <input type="radio"/> A <input type="radio"/> B <input type="radio"/> C <input type="radio"/> D	120 <input type="radio"/> A <input type="radio"/> B <input type="radio"/> C <input type="radio"/> D	137 <input type="radio"/> A <input type="radio"/> B <input type="radio"/> C <input type="radio"/> D
ANU LAR <input type="radio"/> A <input type="radio"/> B <input type="radio"/> C <input type="radio"/> D	ANU LAR <input type="radio"/> A <input type="radio"/> B <input type="radio"/> C <input type="radio"/> D	ANU LAR <input type="radio"/> A <input type="radio"/> B <input type="radio"/> C <input type="radio"/> D	ANU LAR <input type="radio"/> A <input type="radio"/> B <input type="radio"/> C <input type="radio"/> D	ANU LAR <input type="radio"/> A <input type="radio"/> B <input type="radio"/> C <input type="radio"/> D	ANU LAR <input type="radio"/> A <input type="radio"/> B <input type="radio"/> C <input type="radio"/> D	ANU LAR <input type="radio"/> A <input type="radio"/> B <input type="radio"/> C <input type="radio"/> D	ANU LAR <input type="radio"/> A <input type="radio"/> B <input type="radio"/> C <input type="radio"/> D	ANU LAR <input type="radio"/> A <input type="radio"/> B <input type="radio"/> C <input type="radio"/> D
2 <input type="radio"/> A <input type="radio"/> B <input type="radio"/> C <input checked="" type="radio"/> D	19 <input type="radio"/> A <input type="radio"/> B <input checked="" type="radio"/> C <input type="radio"/> D	36 <input type="radio"/> A <input type="radio"/> B <input type="radio"/> C <input type="radio"/> D	53 <input type="radio"/> A <input type="radio"/> B <input type="radio"/> C <input type="radio"/> D	70 <input type="radio"/> A <input type="radio"/> B <input type="radio"/> C <input type="radio"/> D	87 <input type="radio"/> A <input type="radio"/> B <input type="radio"/> C <input type="radio"/> D	104 <input type="radio"/> A <input type="radio"/> B <input type="radio"/> C <input type="radio"/> D	121 <input type="radio"/> A <input type="radio"/> B <input type="radio"/> C <input type="radio"/> D	138 <input type="radio"/> A <input type="radio"/> B <input type="radio"/> C <input type="radio"/> D
ANU LAR <input type="radio"/> A <input type="radio"/> B <input type="radio"/> C <input type="radio"/> D	ANU LAR <input type="radio"/> A <input type="radio"/> B <input type="radio"/> C <input type="radio"/> D	ANU LAR <input type="radio"/> A <input type="radio"/> B <input type="radio"/> C <input type="radio"/> D	ANU LAR <input type="radio"/> A <input type="radio"/> B <input type="radio"/> C <input type="radio"/> D	ANU LAR <input type="radio"/> A <input type="radio"/> B <input type="radio"/> C <input type="radio"/> D	ANU LAR <input type="radio"/> A <input type="radio"/> B <input type="radio"/> C <input type="radio"/> D	ANU LAR <input type="radio"/> A <input type="radio"/> B <input type="radio"/> C <input type="radio"/> D	ANU LAR <input type="radio"/> A <input type="radio"/> B <input type="radio"/> C <input type="radio"/> D	ANU LAR <input type="radio"/> A <input type="radio"/> B <input type="radio"/> C <input type="radio"/> D
3 <input type="radio"/> A <input type="radio"/> B <input type="radio"/> C <input checked="" type="radio"/> D	20 <input type="radio"/> A <input type="radio"/> B <input type="radio"/> C <input type="radio"/> D	37 <input type="radio"/> A <input type="radio"/> B <input type="radio"/> C <input type="radio"/> D	54 <input type="radio"/> A <input type="radio"/> B <input type="radio"/> C <input type="radio"/> D	71 <input type="radio"/> A <input type="radio"/> B <input type="radio"/> C <input type="radio"/> D	88 <input type="radio"/> A <input type="radio"/> B <input type="radio"/> C <input type="radio"/> D	105 <input type="radio"/> A <input type="radio"/> B <input type="radio"/> C <input type="radio"/> D	122 <input type="radio"/> A <input type="radio"/> B <input type="radio"/> C <input type="radio"/> D	139 <input type="radio"/> A <input type="radio"/> B <input type="radio"/> C <input type="radio"/> D
ANU LAR <input type="radio"/> A <input type="radio"/> B <input type="radio"/> C <input type="radio"/> D	ANU LAR <input type="radio"/> A <input type="radio"/> B <input type="radio"/> C <input type="radio"/> D	ANU LAR <input type="radio"/> A <input type="radio"/> B <input type="radio"/> C <input type="radio"/> D	ANU LAR <input type="radio"/> A <input type="radio"/> B <input type="radio"/> C <input type="radio"/> D	ANU LAR <input type="radio"/> A <input type="radio"/> B <input type="radio"/> C <input type="radio"/> D	ANU LAR <input type="radio"/> A <input type="radio"/> B <input type="radio"/> C <input type="radio"/> D	ANU LAR <input type="radio"/> A <input type="radio"/> B <input type="radio"/> C <input type="radio"/> D	ANU LAR <input type="radio"/> A <input type="radio"/> B <input type="radio"/> C <input type="radio"/> D	ANU LAR <input type="radio"/> A <input type="radio"/> B <input type="radio"/> C <input type="radio"/> D
4 <input type="radio"/> A <input type="radio"/> B <input checked="" type="radio"/> C <input type="radio"/> D	21 <input type="radio"/> A <input type="radio"/> B <input type="radio"/> C <input checked="" type="radio"/> D	38 <input type="radio"/> A <input type="radio"/> B <input type="radio"/> C <input type="radio"/> D	55 <input type="radio"/> A <input type="radio"/> B <input type="radio"/> C <input type="radio"/> D	72 <input type="radio"/> A <input type="radio"/> B <input type="radio"/> C <input type="radio"/> D	89 <input type="radio"/> A <input type="radio"/> B <input type="radio"/> C <input type="radio"/> D	106 <input type="radio"/> A <input type="radio"/> B <input type="radio"/> C <input type="radio"/> D	123 <input type="radio"/> A <input type="radio"/> B <input type="radio"/> C <input type="radio"/> D	140 <input type="radio"/> A <input type="radio"/> B <input type="radio"/> C <input type="radio"/> D
ANU LAR <input type="radio"/> A <input type="radio"/> B <input type="radio"/> C <input type="radio"/> D	ANU LAR <input type="radio"/> A <input type="radio"/> B <input type="radio"/> C <input type="radio"/> D	ANU LAR <input type="radio"/> A <input type="radio"/> B <input type="radio"/> C <input type="radio"/> D	ANU LAR <input type="radio"/> A <input type="radio"/> B <input type="radio"/> C <input type="radio"/> D	ANU LAR <input type="radio"/> A <input type="radio"/> B <input type="radio"/> C <input type="radio"/> D	ANU LAR <input type="radio"/> A <input type="radio"/> B <input type="radio"/> C <input type="radio"/> D	ANU LAR <input type="radio"/> A <input type="radio"/> B <input type="radio"/> C <input type="radio"/> D	ANU LAR <input type="radio"/> A <input type="radio"/> B <input type="radio"/> C <input type="radio"/> D	ANU LAR <input type="radio"/> A <input type="radio"/> B <input type="radio"/> C <input type="radio"/> D
5 <input type="radio"/> A <input type="radio"/> B <input checked="" type="radio"/> C <input type="radio"/> D	22 <input type="radio"/> A <input type="radio"/> B <input type="radio"/> C <input checked="" type="radio"/> D	39 <input type="radio"/> A <input type="radio"/> B <input type="radio"/> C <input type="radio"/> D	56 <input type="radio"/> A <input type="radio"/> B <input type="radio"/> C <input type="radio"/> D	73 <input type="radio"/> A <input type="radio"/> B <input type="radio"/> C <input type="radio"/> D	90 <input type="radio"/> A <input type="radio"/> B <input type="radio"/> C <input type="radio"/> D	107 <input type="radio"/> A <input type="radio"/> B <input type="radio"/> C <input type="radio"/> D	124 <input type="radio"/> A <input type="radio"/> B <input type="radio"/> C <input type="radio"/> D	141 <input type="radio"/> A <input type="radio"/> B <input type="radio"/> C <input type="radio"/> D
ANU LAR <input type="radio"/> A <input type="radio"/> B <input type="radio"/> C <input type="radio"/> D	ANU LAR <input type="radio"/> A <input type="radio"/> B <input type="radio"/> C <input type="radio"/> D	ANU LAR <input type="radio"/> A <input type="radio"/> B <input type="radio"/> C <input type="radio"/> D	ANU LAR <input type="radio"/> A <input type="radio"/> B <input type="radio"/> C <input type="radio"/> D	ANU LAR <input type="radio"/> A <input type="radio"/> B <input type="radio"/> C <input type="radio"/> D	ANU LAR <input type="radio"/> A <input type="radio"/> B <input type="radio"/> C <input type="radio"/> D	ANU LAR <input type="radio"/> A <input type="radio"/> B <input type="radio"/> C <input type="radio"/> D	ANU LAR <input type="radio"/> A <input type="radio"/> B <input type="radio"/> C <input type="radio"/> D	ANU LAR <input type="radio"/> A <input type="radio"/> B <input type="radio"/> C <input type="radio"/> D
6 <input type="radio"/> A <input type="radio"/> B <input checked="" type="radio"/> C <input type="radio"/> D	23 <input type="radio"/> A <input type="radio"/> B <input type="radio"/> C <input checked="" type="radio"/> D	40 <input type="radio"/> A <input type="radio"/> B <input type="radio"/> C <input type="radio"/> D	57 <input type="radio"/> A <input type="radio"/> B <input type="radio"/> C <input type="radio"/> D	74 <input type="radio"/> A <input type="radio"/> B <input type="radio"/> C <input type="radio"/> D	91 <input type="radio"/> A <input type="radio"/> B <input type="radio"/> C <input type="radio"/> D	108 <input type="radio"/> A <input type="radio"/> B <input type="radio"/> C <input type="radio"/> D	125 <input type="radio"/> A <input type="radio"/> B <input type="radio"/> C <input type="radio"/> D	142 <input type="radio"/> A <input type="radio"/> B <input type="radio"/> C <input type="radio"/> D
ANU LAR <input type="radio"/> A <input type="radio"/> B <input type="radio"/> C <input type="radio"/> D	ANU LAR <input type="radio"/> A <input type="radio"/> B <input type="radio"/> C <input type="radio"/> D	ANU LAR <input type="radio"/> A <input type="radio"/> B <input type="radio"/> C <input type="radio"/> D	ANU LAR <input type="radio"/> A <input type="radio"/> B <input type="radio"/> C <input type="radio"/> D	ANU LAR <input type="radio"/> A <input type="radio"/> B <input type="radio"/> C <input type="radio"/> D	ANU LAR <input type="radio"/> A <input type="radio"/> B <input type="radio"/> C <input type="radio"/> D	ANU LAR <input type="radio"/> A <input type="radio"/> B <input type="radio"/> C <input type="radio"/> D	ANU LAR <input type="radio"/> A <input type="radio"/> B <input type="radio"/> C <input type="radio"/> D	ANU LAR <input type="radio"/> A <input type="radio"/> B <input type="radio"/> C <input type="radio"/> D
7 <input type="radio"/> A <input type="radio"/> B <input checked="" type="radio"/> C <input type="radio"/> D	24 <input type="radio"/> A <input type="radio"/> B <input type="radio"/> C <input checked="" type="radio"/> D	41 <input type="radio"/> A <input type="radio"/> B <input type="radio"/> C <input type="radio"/> D	58 <input type="radio"/> A <input type="radio"/> B <input type="radio"/> C <input type="radio"/> D	75 <input type="radio"/> A <input type="radio"/> B <input type="radio"/> C <input type="radio"/> D	92 <input type="radio"/> A <input type="radio"/> B <input type="radio"/> C <input type="radio"/> D	109 <input type="radio"/> A <input type="radio"/> B <input type="radio"/> C <input type="radio"/> D	126 <input type="radio"/> A <input type="radio"/> B <input type="radio"/> C <input type="radio"/> D	143 <input type="radio"/> A <input type="radio"/> B <input type="radio"/> C <input type="radio"/> D
ANU LAR <input type="radio"/> A <input type="radio"/> B <input type="radio"/> C <input type="radio"/> D	ANU LAR <input type="radio"/> A <input type="radio"/> B <input type="radio"/> C <input type="radio"/> D	ANU LAR <input type="radio"/> A <input type="radio"/> B <input type="radio"/> C <input type="radio"/> D	ANU LAR <input type="radio"/> A <input type="radio"/> B <input type="radio"/> C <input type="radio"/> D	ANU LAR <input type="radio"/> A <input type="radio"/> B <input type="radio"/> C <input type="radio"/> D	ANU LAR <input type="radio"/> A <input type="radio"/> B <input type="radio"/> C <input type="radio"/> D	ANU LAR <input type="radio"/> A <input type="radio"/> B <input type="radio"/> C <input type="radio"/> D	ANU LAR <input type="radio"/> A <input type="radio"/> B <input type="radio"/> C <input type="radio"/> D	ANU LAR <input type="radio"/> A <input type="radio"/> B <input type="radio"/> C <input type="radio"/> D
8 <input checked="" type="radio"/> A <input type="radio"/> B <input type="radio"/> C <input type="radio"/> D	25 <input type="radio"/> A <input type="radio"/> B <input type="radio"/> C <input checked="" type="radio"/> D	42 <input type="radio"/> A <input type="radio"/> B <input type="radio"/> C <input type="radio"/> D	59 <input type="radio"/> A <input type="radio"/> B <input type="radio"/> C <input type="radio"/> D	76 <input type="radio"/> A <input type="radio"/> B <input type="radio"/> C <input type="radio"/> D	93 <input type="radio"/> A <input type="radio"/> B <input type="radio"/> C <input type="radio"/> D	110 <input type="radio"/> A <input type="radio"/> B <input type="radio"/> C <input type="radio"/> D	127 <input type="radio"/> A <input type="radio"/> B <input type="radio"/> C <input type="radio"/> D	144 <input type="radio"/> A <input type="radio"/> B <input type="radio"/> C <input type="radio"/> D
ANU LAR <input type="radio"/> A <input type="radio"/> B <input type="radio"/> C <input type="radio"/> D	ANU LAR <input type="radio"/> A <input type="radio"/> B <input type="radio"/> C <input type="radio"/> D	ANU LAR <input type="radio"/> A <input type="radio"/> B <input type="radio"/> C <input type="radio"/> D	ANU LAR <input type="radio"/> A <input type="radio"/> B <input type="radio"/> C <input type="radio"/> D	ANU LAR <input type="radio"/> A <input type="radio"/> B <input type="radio"/> C <input type="radio"/> D	ANU LAR <input type="radio"/> A <input type="radio"/> B <input type="radio"/> C <input type="radio"/> D	ANU LAR <input type="radio"/> A <input type="radio"/> B <input type="radio"/> C <input type="radio"/> D	ANU LAR <input type="radio"/> A <input type="radio"/> B <input type="radio"/> C <input type="radio"/> D	ANU LAR <input type="radio"/> A <input type="radio"/> B <input type="radio"/> C <input type="radio"/> D
9 <input type="radio"/> A <input type="radio"/> B <input type="radio"/> C <input checked="" type="radio"/> D	26 <input type="radio"/> A <input type="radio"/> B <input type="radio"/> C <input type="radio"/> D	43 <input type="radio"/> A <input type="radio"/> B <input type="radio"/> C <input type="radio"/> D	60 <input type="radio"/> A <input type="radio"/> B <input type="radio"/> C <input type="radio"/> D	77 <input type="radio"/> A <input type="radio"/> B <input type="radio"/> C <input type="radio"/> D	94 <input type="radio"/> A <input type="radio"/> B <input type="radio"/> C <input type="radio"/> D	111 <input type="radio"/> A <input type="radio"/> B <input type="radio"/> C <input type="radio"/> D	128 <input type="radio"/> A <input type="radio"/> B <input type="radio"/> C <input type="radio"/> D	145 <input type="radio"/> A <input type="radio"/> B <input type="radio"/> C <input type="radio"/> D
ANU LAR <input type="radio"/> A <input type="radio"/> B <input type="radio"/> C <input type="radio"/> D	ANU LAR <input type="radio"/> A <input type="radio"/> B <input type="radio"/> C <input type="radio"/> D	ANU LAR <input type="radio"/> A <input type="radio"/> B <input type="radio"/> C <input type="radio"/> D	ANU LAR <input type="radio"/> A <input type="radio"/> B <input type="radio"/> C <input type="radio"/> D	ANU LAR <input type="radio"/> A <input type="radio"/> B <input type="radio"/> C <input type="radio"/> D	ANU LAR <input type="radio"/> A <input type="radio"/> B <input type="radio"/> C <input type="radio"/> D	ANU LAR <input type="radio"/> A <input type="radio"/> B <input type="radio"/> C <input type="radio"/> D	ANU LAR <input type="radio"/> A <input type="radio"/> B <input type="radio"/> C <input type="radio"/> D	ANU LAR <input type="radio"/> A <input type="radio"/> B <input type="radio"/> C <input type="radio"/> D
10 <input type="radio"/> A <input type="radio"/> B <input type="radio"/> C <input checked="" type="radio"/> D	27 <input type="radio"/> A <input type="radio"/> B <input type="radio"/> C <input type="radio"/> D	44 <input type="radio"/> A <input type="radio"/> B <input type="radio"/> C <input type="radio"/> D	61 <input type="radio"/> A <input type="radio"/> B <input type="radio"/> C <input type="radio"/> D	78 <input type="radio"/> A <input type="radio"/> B <input type="radio"/> C <input type="radio"/> D	95 <input type="radio"/> A <input type="radio"/> B <input type="radio"/> C <input type="radio"/> D	112 <input type="radio"/> A <input type="radio"/> B <input type="radio"/> C <input type="radio"/> D	129 <input type="radio"/> A <input type="radio"/> B <input type="radio"/> C <input type="radio"/> D	146 <input type="radio"/> A <input type="radio"/> B <input type="radio"/> C <input type="radio"/> D
ANU LAR <input type="radio"/> A <input type="radio"/> B <input type="radio"/> C <input type="radio"/> D	ANU LAR <input type="radio"/> A <input type="radio"/> B <input type="radio"/> C <input type="radio"/> D	ANU LAR <input type="radio"/> A <input type="radio"/> B <input type="radio"/> C <input type="radio"/> D	ANU LAR <input type="radio"/> A <input type="radio"/> B <input type="radio"/> C <input type="radio"/> D	ANU LAR <input type="radio"/> A <input type="radio"/> B <input type="radio"/> C <input type="radio"/> D	ANU LAR <input type="radio"/> A <input type="radio"/> B <input type="radio"/> C <input type="radio"/> D	ANU LAR <input type="radio"/> A <input type="radio"/> B <input type="radio"/> C <input type="radio"/> D	ANU LAR <input type="radio"/> A <input type="radio"/> B <input type="radio"/> C <input type="radio"/> D	ANU LAR <input type="radio"/> A <input type="radio"/> B <input type="radio"/> C <input type="radio"/> D
11 <input type="radio"/> A <input checked="" type="radio"/> B <input type="radio"/> C <input type="radio"/> D	28 <input type="radio"/> A <input type="radio"/> B <input type="radio"/> C <input type="radio"/> D	45 <input type="radio"/> A <input type="radio"/> B <input type="radio"/> C <input type="radio"/> D	62 <input type="radio"/> A <input type="radio"/> B <input type="radio"/> C <input type="radio"/> D	79 <input type="radio"/> A <input type="radio"/> B <input type="radio"/> C <input type="radio"/> D	96 <input type="radio"/> A <input type="radio"/> B <input type="radio"/> C <input type="radio"/> D	113 <input type="radio"/> A <input type="radio"/> B <input type="radio"/> C <input type="radio"/> D	130 <input type="radio"/> A <input type="radio"/> B <input type="radio"/> C <input type="radio"/> D	147 <input type="radio"/> A <input type="radio"/> B <input type="radio"/> C <input type="radio"/> D
ANU LAR <input type="radio"/> A <input type="radio"/> B <input type="radio"/> C <input type="radio"/> D	ANU LAR <input type="radio"/> A <input type="radio"/> B <input type="radio"/> C <input type="radio"/> D	ANU LAR <input type="radio"/> A <input type="radio"/> B <input type="radio"/> C <input type="radio"/> D	ANU LAR <input type="radio"/> A <input type="radio"/> B <input type="radio"/> C <input type="radio"/> D	ANU LAR <input type="radio"/> A <input type="radio"/> B <input type="radio"/> C <input type="radio"/> D	ANU LAR <input type="radio"/> A <input type="radio"/> B <input type="radio"/> C <input type="radio"/> D	ANU LAR <input type="radio"/> A <input type="radio"/> B <input type="radio"/> C <input type="radio"/> D	ANU LAR <input type="radio"/> A <input type="radio"/> B <input type="radio"/> C <input type="radio"/> D	ANU LAR <input type="radio"/> A <input type="radio"/> B <input type="radio"/> C <input type="radio"/> D
12 <input type="radio"/> A <input checked="" type="radio"/> B <input type="radio"/> C <input type="radio"/> D	29 <input type="radio"/> A <input type="radio"/> B <input type="radio"/> C <input type="radio"/> D	46 <input type="radio"/> A <input type="radio"/> B <input type="radio"/> C <input type="radio"/> D	63 <input type="radio"/> A <input type="radio"/> B <input type="radio"/> C <input type="radio"/> D	80 <input type="radio"/> A <input type="radio"/> B <input type="radio"/> C <input type="radio"/> D	97 <input type="radio"/> A <input type="radio"/> B <input type="radio"/> C <input type="radio"/> D	114 <input type="radio"/> A <input type="radio"/> B <input type="radio"/> C <input type="radio"/> D	131 <input type="radio"/> A <input type="radio"/> B <input type="radio"/> C <input type="radio"/> D	148 <input type="radio"/> A <input type="radio"/> B <input type="radio"/> C <input type="radio"/> D
ANU LAR <input type="radio"/> A <input type="radio"/> B <input type="radio"/> C <input type="radio"/> D	ANU LAR <input type="radio"/> A <input type="radio"/> B <input type="radio"/> C <input type="radio"/> D	ANU LAR <input type="radio"/> A <input type="radio"/> B <input type="radio"/> C <input type="radio"/> D	ANU LAR <input type="radio"/> A <input type="radio"/> B <input type="radio"/> C <input type="radio"/> D	ANU LAR <input type="radio"/> A <input type="radio"/> B <input type="radio"/> C <input type="radio"/> D	ANU LAR <input type="radio"/> A <input type="radio"/> B <input type="radio"/> C <input type="radio"/> D	ANU LAR <input type="radio"/> A <input type="radio"/> B <input type="radio"/> C <input type="radio"/> D	ANU LAR <input type="radio"/> A <input type="radio"/> B <input type="radio"/> C <input type="radio"/> D	ANU LAR <input type="radio"/> A <input type="radio"/> B <input type="radio"/> C <input type="radio"/> D
13 <input type="radio"/> A <input type="radio"/> B <input type="radio"/> C <input checked="" type="radio"/> D	30 <input type="radio"/> A <input type="radio"/> B <input type="radio"/> C <input type="radio"/> D	47 <input type="radio"/> A <input type="radio"/> B <input type="radio"/> C <input type="radio"/> D	64 <input type="radio"/> A <input type="radio"/> B <input type="radio"/> C <input type="radio"/> D	81 <input type="radio"/> A <input type="radio"/> B <input type="radio"/> C <input type="radio"/> D	98 <input type="radio"/> A <input type="radio"/> B <input type="radio"/> C <input type="radio"/> D	115 <input type="radio"/> A <input type="radio"/> B <input type="radio"/> C <input type="radio"/> D	132 <input type="radio"/> A <input type="radio"/> B <input type="radio"/> C <input type="radio"/> D	149 <input type="radio"/> A <input type="radio"/> B <input type="radio"/> C <input type="radio"/> D
ANU LAR <input type="radio"/> A <input type="radio"/> B <input type="radio"/> C <input type="radio"/> D	ANU LAR <input type="radio"/> A <input type="radio"/> B <input type="radio"/> C <input type="radio"/> D	ANU LAR <input type="radio"/> A <input type="radio"/> B <input type="radio"/> C <input type="radio"/> D	ANU LAR <input type="radio"/> A <input type="radio"/> B <input type="radio"/> C <input type="radio"/> D	ANU LAR <input type="radio"/> A <input type="radio"/> B <input type="radio"/> C <input type="radio"/> D	ANU LAR <input type="radio"/> A <input type="radio"/> B <input type="radio"/> C <input type="radio"/> D	ANU LAR <input type="radio"/> A <input type="radio"/> B <input type="radio"/> C <input type="radio"/> D	ANU LAR <input type="radio"/> A <input type="radio"/> B <input type="radio"/> C <input type="radio"/> D	ANU LAR <input type="radio"/> A <input type="radio"/> B <input type="radio"/> C <input type="radio"/> D
14 <input type="radio"/> A <input type="radio"/> B <input checked="" type="radio"/> C <input type="radio"/> D	31 <input type="radio"/> A <input type="radio"/> B <input type="radio"/> C <input type="radio"/> D	48 <input type="radio"/> A <input type="radio"/> B <input type="radio"/> C <input type="radio"/> D	65 <input type="radio"/> A <input type="radio"/> B <input type="radio"/> C <input type="radio"/> D	82 <input type="radio"/> A <input type="radio"/> B <input type="radio"/> C <input type="radio"/> D	99 <input type="radio"/> A <input type="radio"/> B <input type="radio"/> C <input type="radio"/> D	116 <input type="radio"/> A <input type="radio"/> B <input type="radio"/> C <input type="radio"/> D	133 <input type="radio"/> A <input type="radio"/> B <input type="radio"/> C <input type="radio"/> D	150 <input type="radio"/> A <input type="radio"/> B <input type="radio"/> C <input type="radio"/> D
ANU LAR <input type="radio"/> A <input type="radio"/> B <input type="radio"/> C <input type="radio"/> D	ANU LAR <input type="radio"/> A <input type="radio"/> B <input type="radio"/> C <input type="radio"/> D	ANU LAR <input type="radio"/> A <input type="radio"/> B <input type="radio"/> C						